



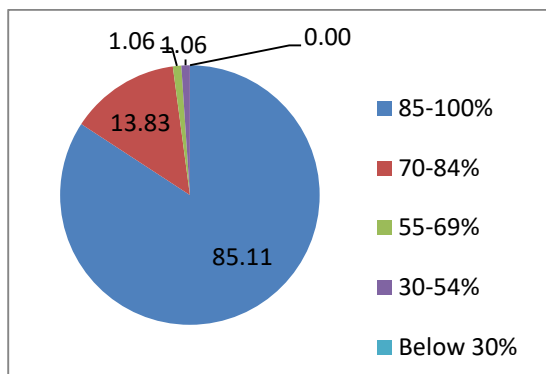
**JSPM's
JAYWANTRAO SAWANAT COLLEGE OF ENGINEERING**

**Sr.No. 58, Handewadi Road, Hadapsar, Pune, Maharashtra
411028**



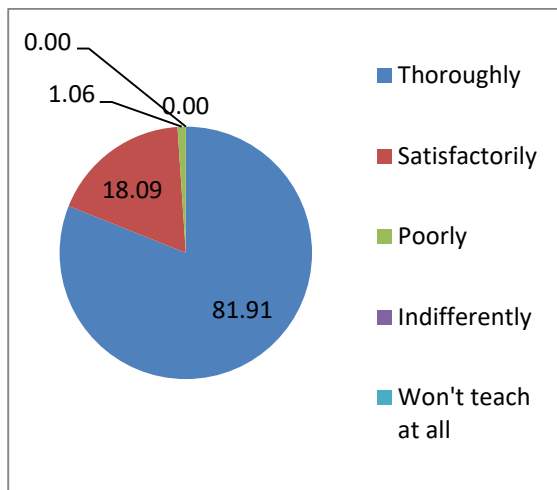
Q.1) How much of the Syllabus was covered in the Class?

294 Responses



Q.2) How well did the Teachers prepare for the Classes?

294 Responses





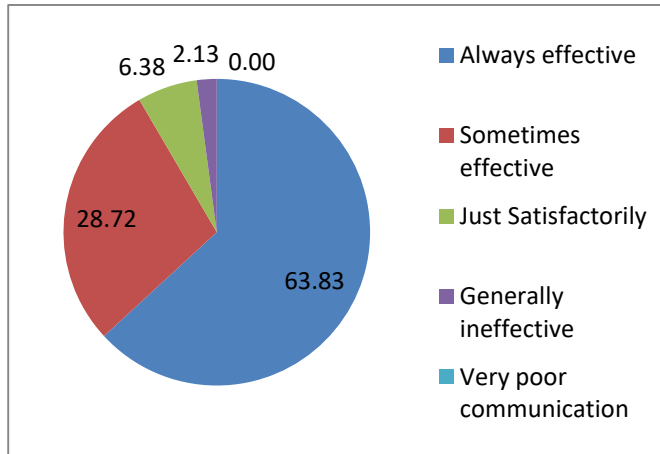
**JSPM's
JAYWANTRAO SAWANAT COLLEGE OF ENGINEERING**

**Sr.No. 58, Handewadi Road, Hadapsar, Pune, Maharashtra
411028**



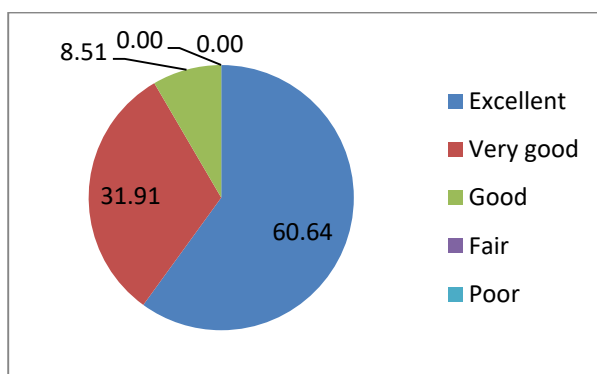
Q.3) How well were the teachers able to communicate?

294 Responses



Q.4) the Teachers approach to teaching can best be described as

294 Responses





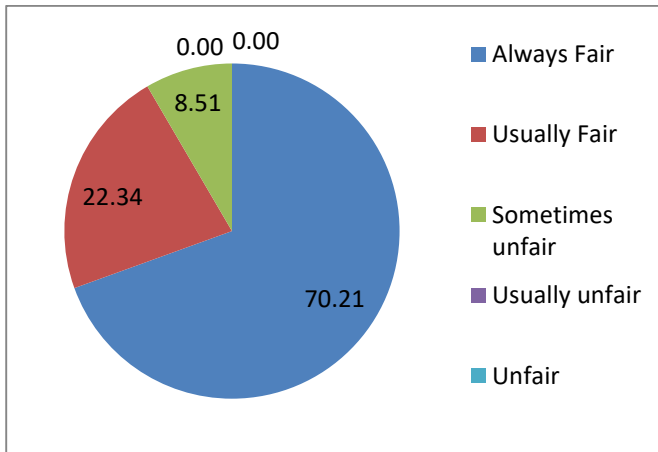
**JSPM's
JAYWANTRAO SAWANAT COLLEGE OF ENGINEERING**

**Sr.No. 58, Handewadi Road, Hadapsar, Pune, Maharashtra
411028**



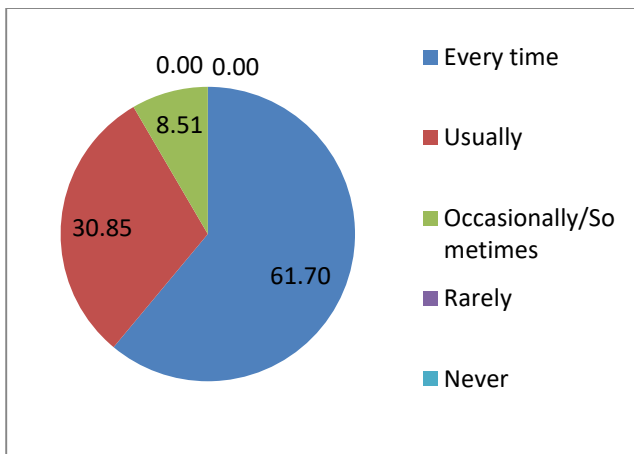
Q.5) Fairness of the internal evaluation process by the teachers.

294 Responses



Q.6) was your performance in assignments discussed with you?

294 Responses





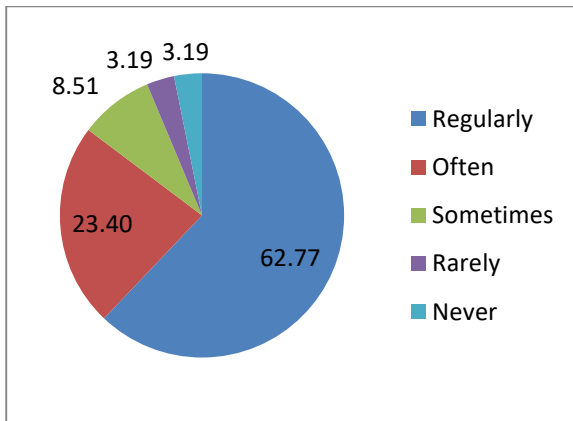
**JSPM's
JAYWANTRAO SAWANAT COLLEGE OF ENGINEERING**

**Sr.No. 58, Handewadi Road, Hadapsar, Pune, Maharashtra
411028**



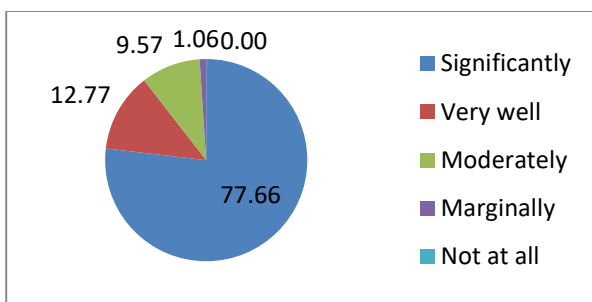
Q.7) The Institute takes active interest in promoting intership, student exchange and field visit opportunities for Students.

294 Responses



Q.8) The teaching and mentoring process in your institution facilitates you in cognitive, social and emotional growth.

294 Responses





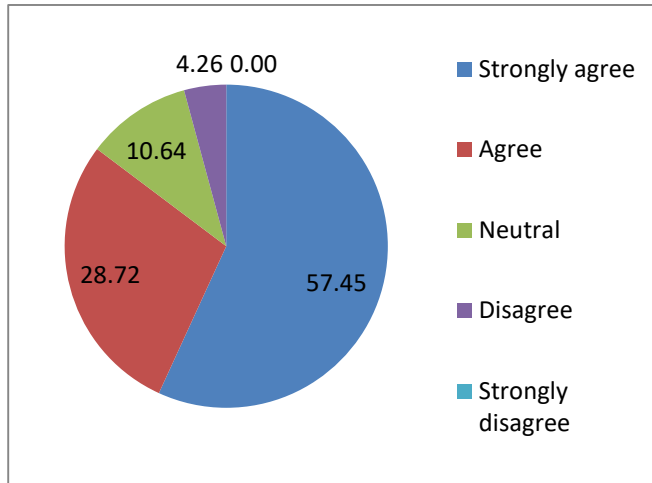
**JSPM's
JAYWANTRAO SAWANAT COLLEGE OF ENGINEERING**

**Sr.No. 58, Handewadi Road, Hadapsar, Pune, Maharashtra
411028**



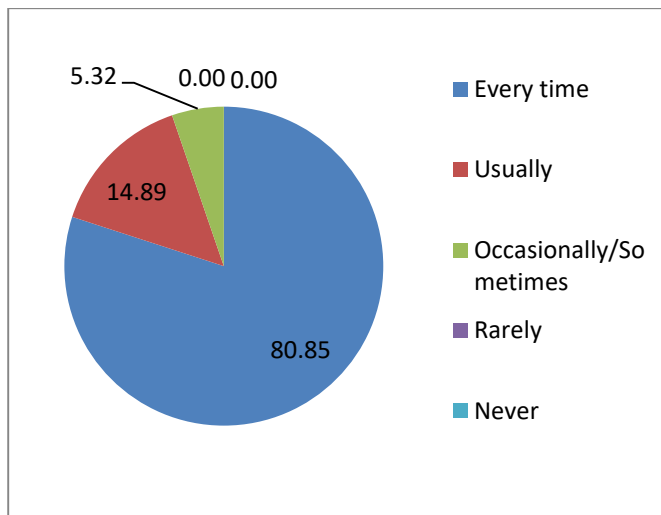
Q.9) The Institution provides multiple opportunities to learn and grow.

294 Responses



Q.10) Teachers inform you about your expected competencies, course outcomes and Programme outcomes.

294 Responses





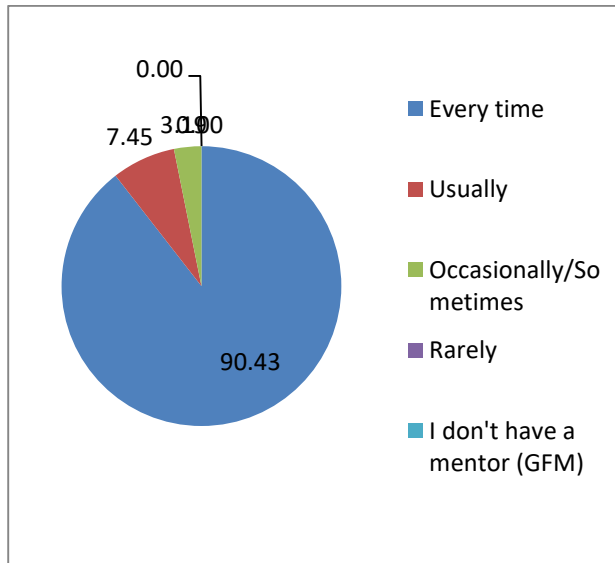
**JSPM's
JAYWANTRAO SAWANAT COLLEGE OF ENGINEERING**

**Sr.No. 58, Handewadi Road, Hadapsar, Pune, Maharashtra
411028**



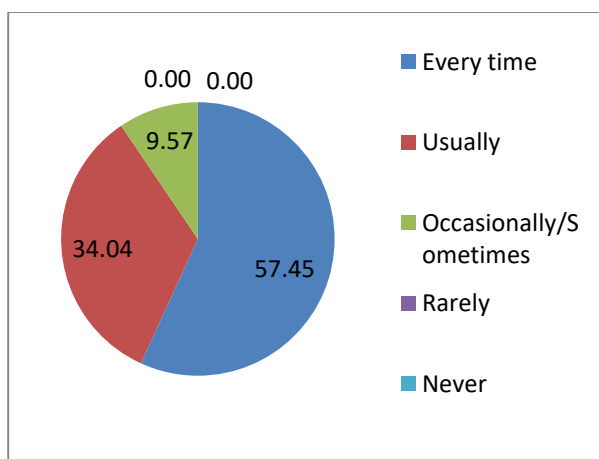
Q.11) Your mentor (GFM) does a necessary follow-up with an assigned task to you.

294 Responses



Q.12 The teachers illustrate the concepts through examples and applications

294 Responses





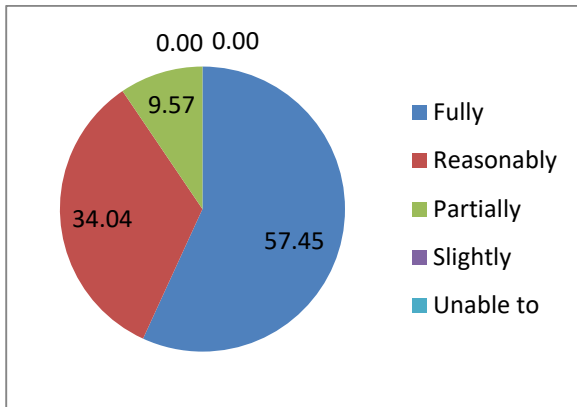
**JSPM's
JAYWANTRAO SAWANAT COLLEGE OF ENGINEERING**

**Sr.No. 58, Handewadi Road, Hadapsar, Pune, Maharashtra
411028**



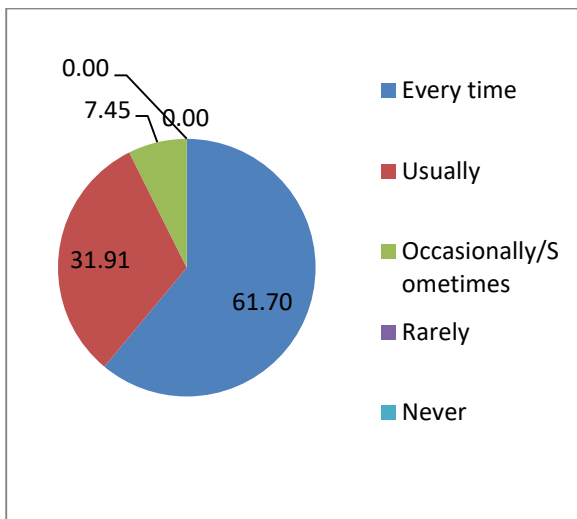
Q.13 The teachers identify your strengths and encourage you with providing right level of challenges

294 Responses



Q.14 Teachers are able to identify your weaknesses and help you to overcome them.

294 Responses





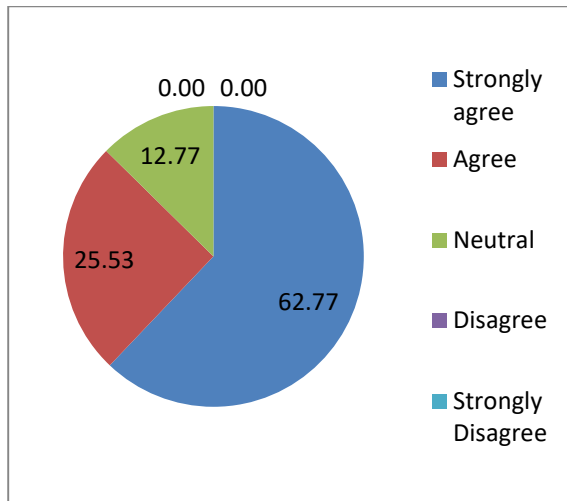
**JSPM's
JAYWANTRAO SAWANAT COLLEGE OF ENGINEERING**



**Sr.No. 58, Handewadi Road, Hadapsar, Pune, Maharashtra
411028**

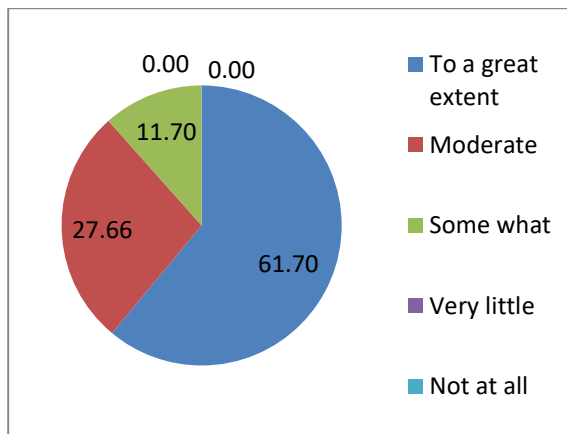
Q.15 The institution makes effort to engage students in the monitoring, review and continuous quality improvement of the teaching learning process.

294 Responses



Q.16 The institute/teachers use students centric methods, such as experiential learning, participative learning and problem solving methodologies for enhancing learning experiences.

294 Responses





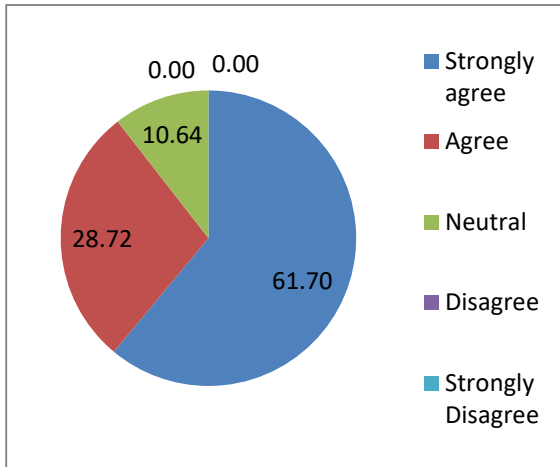
**JSPM's
JAYWANTRAO SAWANAT COLLEGE OF ENGINEERING**

**Sr.No. 58, Handewadi Road, Hadapsar, Pune, Maharashtra
411028**



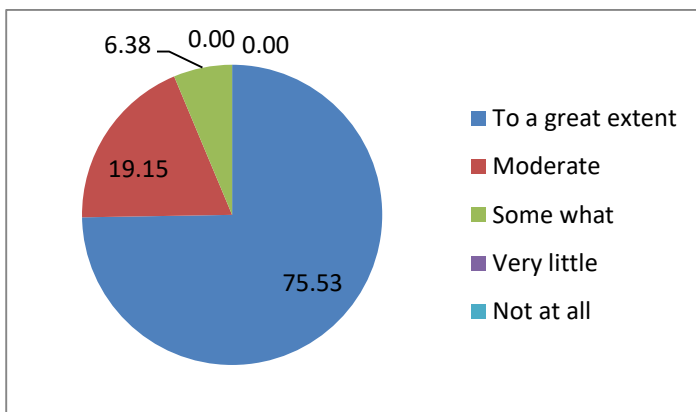
Q.17 Teachers encourage you to participate in extracurricular activities

294 Responses



Q.18 Efforts are made by the institute/Teachers to inculcate soft skills, life skills and employability skills to make you ready for the world of work.

294 Responses





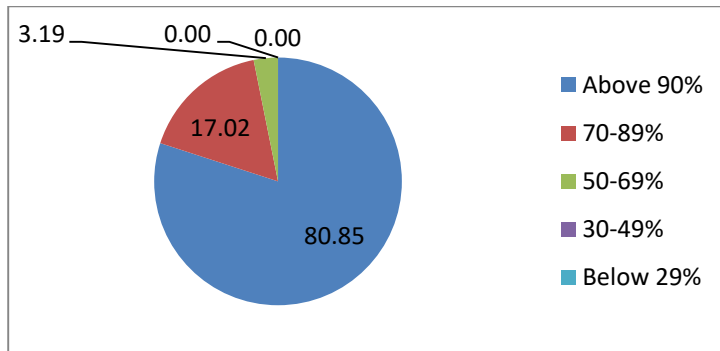
**JSPM's
JAYWANTRAO SAWANAT COLLEGE OF ENGINEERING**

**Sr.No. 58, Handewadi Road, Hadapsar, Pune, Maharashtra
411028**



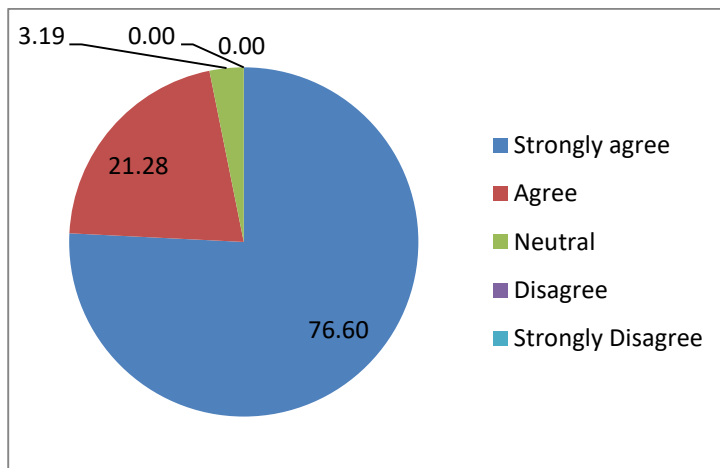
Q.19 What percentage of teachers use ICT tools such as LCD Projector, Multimedia, etc while teaching

294 Responses



Q.20 The overall quality of teaching-learning process in your institute is very good.

294 Responses





**JSPM's
JAYWANTRAO SAWANAT COLLEGE OF ENGINEERING**



**Sr.No. 58, Handewadi Road, Hadapsar, Pune, Maharashtra
411028**

Q.21) Give three observation / suggestions to improve the overall teaching – learning experience in your institution.

For above question, the following responses were given by students;

- 1) The Students have given following Suggestion.
 - To reduce paper work
 - Hands on Industry Standard Training to improve practical knowledge.
 - Increase no. of industrial visit
 - Increase no. of workshops.
- 2) Arrange the meeting with entrepreneurs in every month.
- 3) Happy with the teaching method of staff.
- 4) The sports activity should be included in Regular Time Table.
- 5) Tie-up with the Core Training Institute for Technical Training.